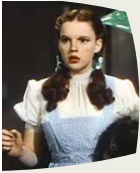




▶ ECHS STAFF DONATES
NEW BAGS TO CANCER
PATIENTS2



▶ A LESSON IN
HISTORY3



▶ ACADEMIC TEAM
TAKES CONFERENCE ..8

2014
2015

February
ISSUE 4

Troian Tribune

ECHS VISION.....TO CREATE A CULTURE OF EDUCATIONAL EXCELLENCE FOR EACH STUDENT.

MISSION STATEMENT.....LEARNING TODAY. LEADING TOMORROW.

Tips for a Safe Spring Break Trip

1. Arrive safely. If you can't avoid night driving, have someone stay up to talk you.
2. Secure your hotel room. Make sure your door is locked and important belongings like passports and wallets are in the safe.
3. Ensure you know the name of your hotel. Memorize the hotel's address.
4. Protect your personal information. Don't tell new acquaintances your hotel name or room number.
5. Employ the buddy system. Never leave a party with a stranger.
6. Ask for help. If you need help, call for help yourself. Don't rely on bystanders to call for you.
7. Drink water and wear sunscreen. Too much time in the sun can leave you dehydrated and at risk for sunburn or sun poisoning. Take a water bottle and sunscreen when you go out.



Be Smart Be Safe



Goody Bags for Cancer

The East Central High School Faculty and Staff had the opportunity to send out warm wishes during the cold winter months. A \$25.00 donation was collected from any interested teacher or staff member to purchase a beautiful 31-Bag that would be filled with goodies and given to cancer patients at the Hansen Center, Batesville, Indiana.

Ms. Kari Ann Rennekamp, Social Service Director for the Hansen Center, emailed pictures to share with the ECHS staff. Ms. Rennekamp said, *“THE CANCER PATIENTS ABSOLUTELY LOVE THEM!”*

Seven bags were donated, and each of the seven bags included such things as: A blanket, hard candies, cards from a Girl Scout Troop, tissues, stress ball, notebook, Ink pens, Crossword puzzle books, etc.



The Hansen Center Nurses modeling some of the 31-Bags bags!





East Central High School – Department of History

The Wizard of Oz, upon a first viewing, seems like a simple children's story with crazy characters and a fast-paced storyline. And, while it almost certainly was written primarily as a children's book, it was, in all likelihood, also a very complex allegory that sought to satirize one of the major political movements of the 1800's.



L. Frank Baum – photo as published in *The Los Angeles Times*

L. Frank Baum, the author of *The Wonderful Wizard of Oz* spent most of the 1890's as an agriculture reporter in South Dakota. This is significant because it would have put him in a front-row position to witness, and write about, the agricultural/political movement known as **Populism**.



The Populist party was a political party that formed in the period 1892-1896. It was made up chiefly of Midwestern farmers. Their goal was to reform the American political system and, most importantly, encourage inflation so that they could receive higher prices for their crops. (In the years following the Civil War, many large-scale farmers in the Midwest found themselves deep in debt, while the prices for their products were in decline). The Populist party had a number of goals, but the most important was the Free Coinage of Silver. By allowing silver to stand on its own value (instead of being backed by gold like paper money), they hoped to introduce a lot more currency into the economy and encourage inflation (and higher prices for their crops).

The leader of the Populist party was William Jennings Bryan. A pacifist known as the greatest orator of the late nineteenth century. The Populists nominated him for President at their convention in **Omaha, Nebraska in 1896** (that's important – I'll explain why in a moment)... and he almost won... losing a close race to Republican William McKinley.

So.... what does this have to do with the Wizard of Oz? Well... remember... **L. Frank Baum** was a professional agriculture reporter while all of this was going on, and it would have had to occupy a central part of his professional consciousness throughout the 1890's (the book was published in 1900). Each of the characters in the book actually represents one some aspect of Populism. For example:

Dorothy - the ordinary "Little Guy" who really doesn't understand what is happening and only wants things to return to normal.

The Scarecrow - The (brainless) Midwestern Farmer. He seems dumb, but he is actually quite crafty. People frequently seem to underestimate him. Whenever the

(Continued on page 4)



(Continued from page 3)

gang needs a plan, he comes up with one.

The Tin Man - The dehumanized (heartless) Industrial Worker. He is dependable, but cannot function without oil.

The Cowardly Lion - William Jennings Bryan. W.J. Bryan was a noted pacifist (hence... the cowardly part) and... like the lion... was



William Jennings Bryan – Leader of the Populist Movement and Presidential Candidate

known for his forceful, long-winded speeches.

OK... does that seem like a stretch? Consider these characters/plot devices:

Dorothy's slippers - In the movie they're ruby, but in the book they are silver. And they give her magical powers as long as she doesn't lose them. To reach her goal, she must use them to travel the "Yellow Brick Road"... gold bricks.

The Wicked Witch of the West - Represents all of the forces and obstacles of the untamed western

states. She is conquered by water.... irrigation.

The Wizard - Is an allegory for the President. He seems powerful, but is actually a big phony with no real ability to help the travelers.

Emerald City - Green is the color of money, and Washington D.C. was where it came from.

Toto - Short for Teetotalers - the Prohibitionist Party that allied themselves with the Populists in 1896. They were a small group, but very politically active and known for never backing down from a fight.

The Tornado - The Omaha Populist Party Convention of 1896 (which Dorothy finds herself swept up in).

The Lollipop Guild - Labor unions at the time were known as "Guilds". This probably represents the Knights of Labor, an influential group at the time.

OZ - One of the big debates within the Populist party was what the ratio of Gold to Silver should be.... Ten ounces silver to one ounce gold? Or maybe twelve or sixteen? Whatever... the abbreviation for "ounces" is..... you guessed it. On the original cover of the book... both letters in "Oz" are capitalized.

There's more, but you get the idea.

And so... the heroes of the story travel to the Emerald City to ask for the all-powerful Wizard's help. But... despite his inability to help them, they discover that they already had everything they needed,

and never really required the Wizard's help to begin with.

When questioned about this possibility... Baum refused to admit that the book was an allegory. This isn't surprising though, as admitting the truth would have robbed the book of much of its intrigue. Authors frequently refuse to discuss the symbolism in their work. Melville denied that Moby Dick was allegorical, as did Twain with Huckleberry Finn, Joyce with Ulysses, Hemingway with Old Man and the Sea, etc.

Still not convinced? Think it is all selective reasoning and coincidence? Consider this:

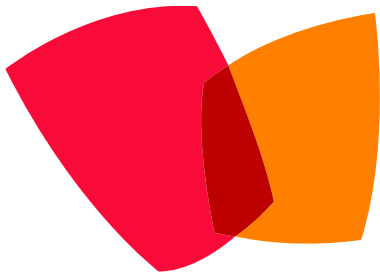
Watch the film (or do a Google Image search for "Wizard of Oz balloon"). At the end, when the Wizard promises to take Dorothy home in his balloon... it reads in huge letters on the side:

"Omaha State Fair"

Why? Omaha isn't a state. And, anyway, Dorothy wants to go to Kansas... not Nebraska.

Only one answer.... The Omaha Populist Party Convention of 1896. In the book, the Wizard mentions to Dorothy, completely out of context, that he was "born in Omaha".

To learn more... see Henry Littlefield's "The Wizard of Oz: Parable on Populism," American Quarterly 16 (Spring, 1964)



Aren't They Sweet!

Youth from the East Central chapter of Family, Career and Community Leaders of America (FCCLA) recently participated in a weekend leadership conference held in New Brunswick, New Jersey. Attendees participated in a weekend of trainings and sessions that challenged, informed, and motivated members and their advisers to become leaders through FCCLA. Along with more than 600 other members and chapter advisers, East Central's FCCLA

chapter advisers, Brenda Osman and Ashley McConnell, and parent chaperones, Donna Lake, Jennifer Jung, Kami Richter, Deanna Richter, Kathy Baas, and Sue Wilhelm accompanied 38 members to the meeting.

The theme of this year's conference was "Together We Are Ready" and attendees were challenged to gain new ideas from the workshops, grow from their participation in the competitive events, and leave the meeting even more "ready" and prepared for your future..

The Opening General Session was

by an inspiring keynote address from Daniel Seddiqui who was able to break out of the deep rut his life had fallen into. Daniel set out to explore the diverse careers, cultures, and environments offered in America. He embarked on a seemingly impossible quest: to work 50 jobs in 50 states in 50 weeks. He's worked as a baseball scout in Massachusetts, a coal miner in West Virginia, a meteorologist in Ohio, a music studio technician in Tennessee, an archaeologist in Arkansas, a petroleum engineer in Texas, a

(Continued on page 6)



(Continued from page 5)

meatpacker in Kansas, a cartographer in North Dakota, a National Park Service ranger in Wyoming, a reverend in Nevada, a lumberjack in Oregon, a dietitian in Mississippi..... and the list goes on!

There were 40 East Central FCCLA Chapter members that attended this national meeting. The students also had the opportunity on the trip to tour Hershey Factory in Hershey Pennsylvania and make their own candy bar and design their own wrapper. The group then proceeded to Hoboken, New Jersey to visit the famous Carlo's Bakery. The following day, the group visited the Bradley Beach so everyone could see and experience the Atlantic Ocean.

Skill demonstration events were also held at the conference, featuring students participating in a wide variety of competitive activities. Events included several oratory and FCCLA-specific knowledge competitions, demonstrations of college and career-ready skills in Family and Consumer Sciences, and exhibitions of culinary food art and knife skills. Congratulations to the following East Central FCCLA members who competed at the National Cluster Meeting in Culinary Culinary Food Art, Occupational division receiving honorable mention is Hannah Cook, third place was Amber Baas and first place was Dana Gagne. Receiving Second Place in Culinary Knife Skills, Occupational Division, is Kaitlyn Mortimer. In Toys that Teach competition in Senior Division, Sabrina Hartung placed 2nd and Jacki Jung place 1st. In the Consumer Math Challenge competition Jr. Division Katelynn Osman placed 1st in the Senior Division Rachel Mages received 2nd place and

in the Occupational Division Lucy Herth received 1st place. In the Culinary Math Challenge, Senior Division, Haley Snook received 3rd place. Receiving 1st place in the Early Childhood Challenge Senior Division is Shelby Lake. East Central FACS Knowledge Bowl team of, Elizabeth Hamersly, Keirstyn Mortimer, Rylie Seaver, Lindsey Bischoff and Sydney Hornberger placed 3rd and will move onto the final round of competition at the National FCCLA Conference in Washington DC, next July. Congratulations to all of the FCCLA members who participated!

Kaitlyn Mortimer, chapter officer, said "this was one of the best conferences I have ever attended; I have always wanted to go to Carlo's Bakery and I learned a lot doing my competitive event." Elizabeth Hamersly, remarked "this conference was exciting and has inspired me to go back and recruit even more members for our chapter."

New Brunswick is one of three nationally sponsored training conferences this fall. The National Cluster Meetings are designed to allow local

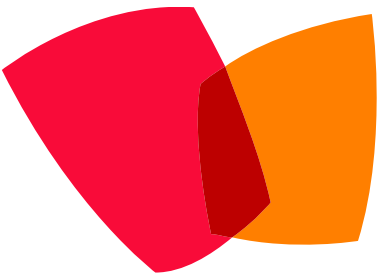


students and teachers to take advantage of high-quality leadership training opportunities. Meetings were also held in Little Rock, Arkansas and Salt Lake City Utah.

FCCLA: The Ultimate Leadership Experience is a dynamic and effective national student organization that helps young men and women become leaders and address important personal, family, work, and societal issues through Family and Consumer Sciences Education. FCCLA has 200,000 members and more than 5,500 chapters from 49 state associations, Puerto Rico, and the Virgin Islands. The organization has involved more than ten million youth since its founding in 1945.

Family, Career and Community Leaders of America is unique among youth organizations because its programs are planned and run by members. It is the only career and technical in-school student organization with the family as its central focus. Participation in national programs and chapter activities helps members become strong leaders in their families, careers, and communities.

Daniel Seddiqui
Keynote Speaker
50 Jobs in 50 States
In 50 Weeks



Business Professionals of America Stands Out in Bloomington

CONGRATULATIONS TO ALL!!

Thirty-one Business Professionals of America Students headed to Bloomington, Indiana on Saturday, January 10, to compete in the District 11 Leadership Conference.

District 11 is comprised of eight schools:

- ◆ Bloomington North
- ◆ Bloomington South
- ◆ Bloomington Academy of Science and Entrepreneurship
- ◆ Columbus North
- ◆ Greensburg
- ◆ North Lawrence
- ◆ Southeastern Career Center
- ◆ East Central High School

The District Leadership Conference was held on Indiana University's Campus, Bloomington, Indiana. All of East Central High School's BPA members enjoyed their time there, and did a great job in their chosen competitions.

Students who placed in their competitions, will move on to the State Leadership Conference, March 15-17, Indianapolis, Indiana.

District Leadership Conference Results

Payroll Accounting

3rd Place – Gwen Kern

Basic Office Procedures

1st Place - Alivia Miller

C ++ Programming

2nd Place – Jason Brown

Interview Skills

3rd Place – Bryssa Helton

Entrepreneurship

2nd Place – Daniel Salyers

Banking & Finance

1st Place - Gwen Kern
3rd Place – Alex Rabold
8th Place – Logan Seig
9th Place – Eric Acheson

Graphic Design Promotion

1st Place – Shay Roepke
3rd Place – Rob Gruen

Presentation Management, Individual

4th – Kaleb Guess
6th – Erin Walsh

Video Production Team

1st Place Team - Grant Bowling, Shay Roepke, Rob Gruen

Small Business Management Team

2nd Place Team - Abby Ashton, Lindsey Altum, Devin Mitts, Rudy Morgan

Visual Basic

2nd Place - Adam Huntington
3rd Place - Logan Seig
4th - Logan Kelly
5th - Jered Wernke

Economic Research

1st Place – Alivia Miller

Medical Office Procedures

2nd Place – Devin Mitts
4th Place – Lindsey Altum

Java Programming

1st Place – Jason Brown

Extemporaneous Speech

1st Place – Bryssa Helton
6th Place – Adam Hunnington

Desktop Publishing

1st Place – Logan Kelly

Fundamental Accounting

2nd Place – Alex Rabold
3rd Place – Lucy Herth
5th Place – Amanda Galle
10th Place – Katelyn Ertel

**THOSE IN YELLOW ARE MOVING ON TO THE STATE LEADERSHIP CONFERENCE



Academic Team Takes Conference

After seeing success last year, when the academic team won the 4 of the 5 conference meets and the overall conference by a mere 6 points, this year's Academic team continued its winning ways. The academic team is comprised of Math, English, Science, Fine Arts and Social Studies teams, as well as an Interdisciplinary (I.D) team that is comprised of the team captains from each of the other teams. Currently with over 35 total members the individual teams and coaches meet weekly before school to practice and prepare for competition.

At the first meet at South Dearborn the academic team jumped out to a 19-point lead over second place Batesville. From there the team won the Lawrenceburg meet by 2.5

points, the home meet by 17.5 points, the Franklin County meet by 21 points and the Greensburg meet by 16.5 points. With this string of victories, the academic team dominated the conference and expanded its lead to 79.6 points over second place Lawrenceburg and 90.3 points over 3rd place Batesville.

As a result of team's overall success, several of our individual teams also won the conference. The I.D. team finished the season with 5 points over Rushville, the Social Studies team finished 11 points over Batesville the English team finished 5 points over Franklin County, and the Math team beat Lawrenceburg by 3 points in the last meet to win the conference by only 0.5 points. By sweeping all five conference meets East Central easily won the conference and kept the Banner at East Central for another year.





USEFUL TOOL FOR TEST TAKERS

My College QuickStart™ is an easy-to-use, online, personalized college and career planning tool available free of charge to all students who take the PSAT/NMSQT. The information and answers provided when the test was taken are incorporated into this useful tool, and it presents data back to students and parents in six main parts:

My Online Score Report- an enhanced score report that allows students to review each test question, the student's answer, and the correct answer with answer explanations.

My SAT Study Plan- a customized SAT study plan based on student PSAT/NMSQT test performance, highlighting skills for review and practice.

My Personality- a detailed personality test that helps students better understand their own strengths and interests.

My College Matches- A starter list of colleges based on the student's state and indicated choice of major.

My Major and Career Matches- Major and career matches that are compatible with the student's general interests and personality type.

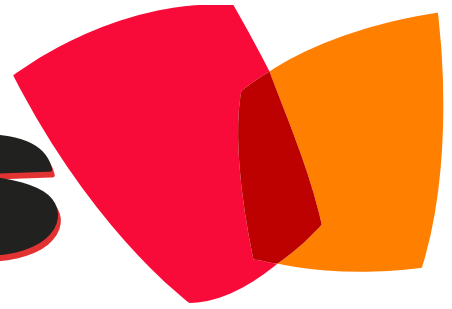
My AP Potential- a report that shows students which AP® courses they may be ready for and which match the college majors that interest them.

Access is available using the access code printed on the student's paper score report, and the tool can be utilized throughout high school. Using My College QuickStart is a great way to introduce and guide students through important aspects of the college-going process. Visit www.collegeboard.org/quickstart.

Mrs. Ester, Director of Guidance/Assistant Principal

E C H S

Business Professionals of America



2015
POLAR PLUNGE®



FOR SPECIAL OLYMPICS

Thank you to all BPA students who worked hard to raise money for this year's Polar Plunge event at the Versailles State Park!

\$801.00 RAISED!

Looking Back..... FCCLA & FFA Celebrate Fall!

By: Anya Polito, FCCLA Vice President of Public Relations

*O*n September 18th, members of FFA and FCCLA participated in the annual hayride event. About 110 students from both organizations were there. The event was held at the farm of Ryan Callahan, son of Kim and Jerry

Callahan. Dinner was of hotdogs, hamburgers, and chips, and the event went from 5:00 until 8:00. Five wagons were used to carry all of the students and chaperones on the trip from the Callahan Farm to St. Peter's and back. Overall,

the members enjoyed the event, and we are hoping that next year will be just as successful. If your son or daughter are interested in participating in FCCLA and FFA please contact Mrs. Osman, Ms. McConnell or Mr. Johnson.





EAST CENTRAL HIGH SCHOOL

GIRLS' VARSITY BASKETBALL

DATE	OPPONENT	SITE	TIME
NOV. 6	NORTH DECATUR	AWAY	6:00
NOV. 11	MADISON CONSOLIDATED	AWAY	7:30
NOV. 15	SHELBYVILLE	HOME	7:30
NOV. 18	JAC-CEN-DEL	HOME	7:30
NOV. 20	COLUMBUS EAST	AWAY	7:30
NOV. 22	RICHMOND	AWAY	7:30
NOV. 26	GREENSBURG	HOME	7:30
NOV. 29	FRANKLIN COUNTY	HOME	1:30
DEC. 4	WILLIAM HENRY HARRISON	HOME	7:30
DEC. 6	JENNINGS COUNTY	HOME	1:30
DEC. 11	COLUMBUS NORTH	AWAY	7:30
DEC. 13	SOUTH DEARBORN	HOME	7:30
DEC. 20	BATESVILLE	AWAY	6:00
DEC. 22-23	HOLIDAY TOURNAMENT	WILLIAM HENRY HARRISON	TBA
JAN. 2-3	GREENFIELD-CENTRAL TOURNAMENT	AWAY	10AM/10AM
JAN. 10	RUSHVILLE	HOME	7:30
JAN. 16	BATESVILLE	HOME	7:30
JAN. 22	FRANKLIN COUNTY	HOME	7:30
JAN. 24	LAWRENCEBURG	AWAY	1:30
JAN. 28	CONNERSVILLE	HOME	7:30
FEB. 3	SOUTH DEARBORN	AWAY	7:30
FEB. 10, 13	IHSAA SECTIONAL	SHELBYVILLE	TBA
FEB. 14	IHSAA SECTIONAL CHAMPIONSHIP	SHELBYVILLE	TBA

GIRLS' JV BASKETBALL

DATE	OPPONENT	SITE	TIME
NOV. 11	MADISON CONSOLIDATED	AWAY	6:00
NOV. 15	SHELBYVILLE	HOME	6:00
NOV. 18	JAC-CEN-DEL	HOME	6:00
NOV. 20	COLUMBUS EAST	AWAY	6:00
NOV. 22	RICHMOND	AWAY	6:00
NOV. 26	GREENSBURG	HOME	6:00
NOV. 29	FRANKLIN COUNTY	HOME	12:00
DEC. 4	WILLIAM HENRY HARRISON	HOME	6:00
DEC. 6	JENNINGS COUNTY	HOME	12:00
DEC. 11	COLUMBUS NORTH	AWAY	6:00
DEC. 13	SOUTH DEARBORN	HOME	6:00
DEC. 20	BATESVILLE	AWAY	7:30
DEC. 22-23	HARRISON HOLIDAY TOURNAMENT	AWAY	TBA
JAN. 3	GREENFIELD-CENTRAL TOURNAMENT	AWAY	10AM
JAN. 10	RUSHVILLE	HOME	6:00
JAN. 16	BATESVILLE	HOME	6:00
JAN. 24	LAWRENCEBURG	AWAY	12:00
JAN. 28	CONNERSVILLE	HOME	6:00
FEB. 3	SOUTH DEARBORN	AWAY	6:00

GIRLS' FRESHMAN BASKETBALL

DATE	OPPONENT	SITE	TIME
NOV. 17	SOUTH DEARBORN	AWAY	6:00
NOV. 20	COLUMBUS EAST	AWAY	6:00
NOV. 24	RUSHVILLE	HOME	6:00
DEC. 4	HARRISON	HOME	6:00
DEC. 8	LAWRENCEBURG	HOME	6:00
DEC. 11	COLUMBUS NORTH	AWAY	6:00
DEC. 15	BATESVILLE	HOME	6:00
DEC. 22-23	HARRISON HOLIDAY TOURNAMENT	AWAY	TBA
JAN. 12	FRANKLIN COUNTY	AWAY	6:00
JAN. 13	COLUMBUS NORTH	AWAY	6:00
JAN. 19	CONNERSVILLE	HOME	6:00
JAN. 22	SOUTH DEARBORN	HOME	6:00
JAN. 31	COLUMBUS NORTH TOURNAMENT	AWAY	9AM

CO-ED VARSITY SWIMMING & DIVING

DATE	OPPONENT	SITE	TIME
NOV. 20	MILAN/SOUTH RIPLEY	HOME	6:00
DEC. 2	GREENSBURG	AWAY	5:30
DEC. 4	LAWRENCEBURG/OLDENBURG	HOME	6:00
DEC. 9	SOUTH DEARBORN	HOME	6:00
DEC. 11	RUSHVILLE	HOME	6:00
DEC. 13	EC-RELAY INVITATIONAL	HOME	11AM
DEC. 20	ZIONSVILLE INVITATIONAL	ZIONSVILLE COMMUNITY	9AM
JAN. 9-10	EIAC (DIVE/SWIM)	CONNERSVILLE	5:00/9AM
JAN. 13	CONNERSVILLE	AWAY	5:30
JAN. 17	RICHMOND	HOME	10AM
JAN. 20	BATESVILLE	HOME	6:00
JAN. 22	HARRISON	HOME	6:00
FEB. 5, 7	IHSAA SECTIONAL PRELIMS/FINALS (G)	COLUMBUS NORTH	5:00/10AM
FEB. 13	IHSAA STATE (G)	IUPUI	5:00
FEB. 19, 21	IHSAA SECTIONAL PRELIMS/FINALS (B)	COLUMBUS NORTH	5:00/10AM
FEB. 27	IHSAA STATE (B)	IUPUI	5:00

TROJANS

2014-2015 WINTER SPORTS

ALL SCHEDULES SUBJECT TO CHANGE, CONTACT THE SCHOOL FOR UPDATED INFORMATION

© 2014-2015 ALL-AMERICAN PUBLISHING, LLC • 1-800-556-1380 • WWW.WEHELPSCHOOLS.COM • ALL-AMERICAN SPORTS POSTERS ©

BOYS' VARSITY BASKETBALL

DATE	OPPONENT	SITE	TIME
NOV. 22	MADISON CONSOLIDATED	HOME	12:00
NOV. 29	JENNINGS COUNTY	HOME	7:30
DEC. 6	RICHMOND	HOME	7:30
DEC. 12	GREENSBURG	HOME	7:30
DEC. 18	SOUTH DEARBORN	AWAY	7:30
DEC. 20	BATESVILLE	AWAY	7:30
DEC. 27	SHELBY SHOOTOUT	SHELBYVILLE	12:30
JAN. 1-3	BOB WETTIG MEMORIAL TOURNAMENT	RICHMOND-TIERNAN CTR.	TBA
JAN. 9	RUSHVILLE	AWAY	7:30
JAN. 15	FRANKLIN COUNTY	AWAY	7:30
JAN. 21	SOUTH DEARBORN	HOME	7:30
JAN. 24	WILLIAM HENRY HARRISON	HOME	7:30
JAN. 30	COLUMBUS EAST	AWAY	7:30
JAN. 31	NORTH DECATUR	AWAY	7:30
FEB. 4	LAWRENCEBURG	HOME	7:30
FEB. 7	COLUMBUS NORTH	HOME	7:30
FEB. 12	CONNERSVILLE	AWAY	7:30
FEB. 14	BATESVILLE	HOME	2:30
FEB. 17	UNION COUNTY	AWAY	7:30
FEB. 21	FRANKLIN COUNTY	HOME	7:30
FEB. 27	GREENSBURG	AWAY	7:30
MAR. 3, 6	IHSAA SECTIONAL	BLOOMINGTON SOUTH	TBA
MAR. 7	IHSAA SECTIONAL CHAMPIONSHIP	BLOOMINGTON SOUTH	TBA

BOYS' JV BASKETBALL

DATE	OPPONENT	SITE	TIME
NOV. 29	JENNINGS COUNTY	HOME	6:00
DEC. 6	RICHMOND	HOME	6:00
DEC. 12	GREENSBURG	HOME	6:00
DEC. 18	SOUTH DEARBORN	AWAY	6:00
DEC. 20	BATESVILLE	AWAY	6:00
DEC. 27	RONCALLI-SHELBY SHOOTOUT	SHELBYVILLE	9AM
JAN. 1-3	BOB WETTIG TOURNAMENT	RICHMOND	TBA
JAN. 9	RUSHVILLE	AWAY	6:00
JAN. 15	FRANKLIN COUNTY	AWAY	6:00
JAN. 21	SOUTH DEARBORN	HOME	6:00
JAN. 24	HARRISON, OH	HOME	6:00
JAN. 30	COLUMBUS EAST	AWAY	6:00
JAN. 31	NORTH DECATUR	AWAY	6:00
FEB. 4	LAWRENCEBURG	HOME	6:00
FEB. 7	COLUMBUS NORTH	HOME	6:00
FEB. 12	CONNERSVILLE	AWAY	6:00
FEB. 14	BATESVILLE	HOME	1:00
FEB. 17	UNION COUNTY	AWAY	6:00
FEB. 21	FRANKLIN COUNTY	HOME	6:00
FEB. 27	GREENSBURG	AWAY	6:00

BOYS' FRESHMAN BASKETBALL

DATE	OPPONENT	SITE	TIME
DEC. 1	SOUTH DEARBORN	HOME	6:00
DEC. 4	FRANKLIN COUNTY	HOME	6:00
DEC. 6	RICHMOND	HOME	6:00
DEC. 8	SOUTH RIPLEY	HOME	6:00
DEC. 11	BATESVILLE	AWAY	6:00
DEC. 15	MILAN	AWAY	6:00
DEC. 18	CONNERSVILLE	AWAY	6:30
DEC. 20	CONNERSVILLE INVITATIONAL	AWAY	9AM
JAN. 7	UNION COUNTY	AWAY	6:30
JAN. 8	GREENSBURG	HOME	7:30
JAN. 9	RUSHVILLE	AWAY	6:00
JAN. 13	RICHMOND	HOME	6:00
JAN. 15	JAC-CEN-DEL	AWAY	6:00
JAN. 20	SHELBYVILLE	HOME	6:00
JAN. 22	LAWRENCEBURG	AWAY	6:00
JAN. 30	COLUMBUS EAST	AWAY	6:00
FEB. 4	HARRISON, OH	HOME	6:00
FEB. 7	COLUMBUS NORTH TOURNAMENT	AWAY	9AM

BOYS' VARSITY WRESTLING

DATE	OPPONENT	SITE	TIME
DEC. 6	WILLIAM HENRY HARRISON	AWAY	9AM
DEC. 11	UNION COUNTY	HOME	6:00
DEC. 13	PENDLETON HEIGHTS INVITATIONAL	AWAY	9AM
DEC. 16	GREENSBURG	HOME	6:00
DEC. 20	EC SIX WAY	HOME	9AM
DEC. 30-31	NORTH MONTGOMERY HOLIDAY DUALS	AWAY	9AM/9AM
JAN. 6	COLUMBUS EAST	AWAY	6:00
JAN. 10	NEW PALESTINE	AWAY	9AM
JAN. 15	FRANKLIN COUNTY	AWAY	6:00
JAN. 17	KNIGHTS CLASSIC	SOUTH DEARBORN	9AM
JAN. 24	EIAC	FRANKLIN COUNTY	9AM
JAN. 31	IHSAA SECTIONAL	SOUTH DEARBORN	9AM
FEB. 7	IHSAA REGIONALS	RICHMOND	9AM
FEB. 14	IHSAA SEMI-STATE	NEW CASTLE CHRYSLER	9AM

BOYS' JV WRESTLING

DATE	OPPONENT	SITE	TIME
DEC. 6	GREENSBURG	AWAY	9AM
DEC. 11	UNION COUNTY	HOME	6:00
DEC. 15	SOUTH DEARBORN ROUND ROBIN	AWAY	5:30
DEC. 16	GREENSBURG	HOME	6:00
DEC. 22	EC ROUND ROBIN	HOME	9AM
JAN. 6	COLUMBUS EAST	AWAY	6:00
JAN. 10	COLUMBUS EAST INVITATIONAL	AWAY	9AM
JAN. 15	FRANKLIN COUNTY	HOME	6:00
JAN. 19	CONNERSVILLE INVITATIONAL	AWAY	6:00